



LEGEND

- LOTS 12 & 13 DP 1088869
- EXTENT OF WORKS WITHIN JOHN OXLEY DRIVE ROAD RESERVE
- PROPOSED ROAD WIDENING BOUNDARY
- GARDEN BED FRONTING JOHN OXLEY DR
 - Lomandra katrinus* (up to 0.8m)
 - Pennisetum 'nafray'* (0.7-0.9m)
 - Dianella caerulea* (up to 0.7m)
 - Lomandra 'shara'* (0.4 - 0.5m)
 - Isolepis nodosa* (0.5 - 1m)
 - Carex appressa* (up to 0.8m)
 - Trachelospermum tricolour* (ground cover)
 - Hardenbergia violacea* (0.75 - 0.1m)
 - Carpobrotus glaucescens* (groundcover)
 - Syzygium Luehmannii* 'Royal Flame' (up to 1.5m)
 - Ficus pumila* 'Climbing Fig' (2.5 - 4m)
- GENERAL GARDEN BEDS
 - Lomandra katrinus* (up to 0.8m)
 - Lomandra hystrix* (up to 2m)
 - Dianella caerulea* (up to 0.7m)
 - Isolepis nodosa* (0.5 - 1m)
 - Trachelospermum tricolour* (ground cover)
 - Hardenbergia violacea* (0.75 - 0.1m)
- ACOUSTIC WALL
 - REFER TO ACOUSTIC CONSULTANTS REPORT
- RETAINING WALL
 - with *Ficus pumila* 'Climbing Fig' (2.5 - 4m)
- FLEXIBLE SPACE
- CONCRETE FOOTPATH
- PAINTED PAVEMENT PEDESTRIAN PATH
- CONCRETE PAVEMENT
- CONCRETE ROADWAY
- PROPOSED SPRINKLER TANKS
- PROPOSED WATER METER & BOOSTER ASSEMBLY LOCATION (WM)
- PYLON SIGN

- GARDEN BED BEHIND ACOUSTIC WALL FRONTING SIENNA GRANGE
 - Casuarina glauca* (Swamp Oak) (mature height up to 10m)
 - Melaleuca quinquenervia* (Broad-leaved Paperbark) (mature height up to 10m)
 - Melaleuca styphelioides* (Prickly Paperbark)
 - Lomandra hystrix* (up to 2m)
 - Isolepis nodosa* (0.5 - 1m)
- GARDEN BED BEHIND ACOUSTIC WALL IN VICINITY OF EXISTING HOUSES
 - Syzygium australe* 'Resilience' (4m high maximum)
 - Lomandra hystrix* (up to 2m)
 - Isolepis nodosa* (0.5 - 1m)
- PROPOSED LARGE TREES
 - Corymbia maculata* (Spotted Gum) (mature height up to 15m)
- PROPOSED SMALL TREES
 - Melaleuca quinquenervia* (Broad-leaved Paperbark) (mature height up to 10m)
 - Cupaniopsis anacardioides* (Tuckeroo) (mature height up to 6-8m)
 - Tristanopsis laurina* 'Luscious' (Water Gum) (mature height 7 - 10m)
- PROPOSED PAD MOUNTED ELECTRICAL SUBSTATION

NOTES:

- ALL EXISTING VEGETATION WITHIN LOTS 12 & 13 IS TO BE REMOVED
- SEE EXHIBIT 05 FOR ALL EXISTING AND PROPOSED EASEMENTS

CAUTION

THIS PLAN HAS BEEN PREPARED FOR THE PURPOSE OF A MODIFICATION TO DA 2015/600. THE INFORMATION SHOWN HEREIN IS ONLY RELIABLE FOR THE ABOVE PURPOSE. IT SHOULD NOT THEREFORE BE USED FOR ANY OTHER PURPOSE WITHOUT VERIFICATION.



K+C REF: O13350_VauxhallPlanningIS96 Modified Exhibits 2018 5350P_Mod Exhibits.dwg - Exhibit 01 - Site master plan, 22-Mar-2018, angela

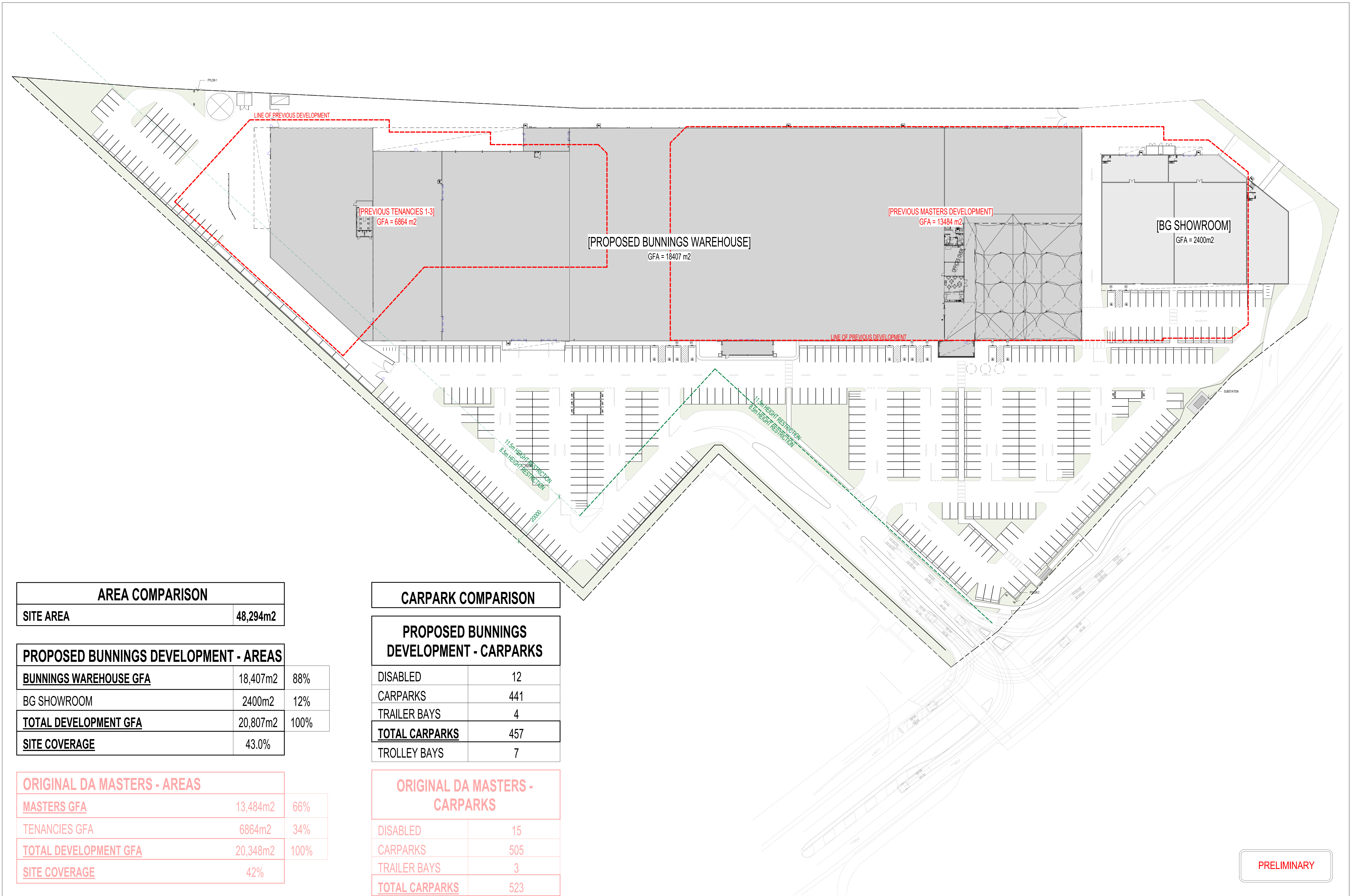
KING + CAMPBELL

King & Campbell Pty Ltd
www.kingcampbell.com.au
A: PO Box 243 Port Macquarie NSW 2444
T: 02 6586 2555
F: 02 6583 4064
E: info@kingcampbell.com.au

REV	DATE	DESCRIPTION
A	05.02.2018	ISSUED FOR SECTION 94 (2)
B	16.03.2018	REVISION TO JOHN OXLEY DRIVE AND ENTRY ROAD
C	22.03.2018	ISSUED FOR SECTION 96 (2)

DATUM: AHD SCALE: 1:1250 @ A3
NOTE: DO NOT SCALE OFF DRAWINGS. USE FIGURED DIMENSIONS ONLY. REPORT ANY DISCREPANCIES TO THE AUTHOR. THIS DRAWING, BEING THE PROPERTY OF KING & CAMPBELL PTY LTD, IS PROTECTED BY COPYRIGHT AND MUST NOT BE USED, REPRODUCED OR COPIED WHOLLY OR IN PART WITHOUT THE WRITTEN PERMISSION OF KING & CAMPBELL PTY LTD.
© King & Campbell Pty Ltd

PROJECT NO:	5350	DRAWING TITLE:	EXHIBIT 01 - MODIFIED SITE MASTER PLAN	A3
DESIGNED BY:	BC	PROJECT:	PROPOSED MODIFICATION TO DA 2015/600 FOR BULKY GOODS PREMISES AND HARDWARE AND BUILDING SUPPLIES, LOTS 12 & 13 DP 1088869 18 JOHN OXLEY DRIVE PORT MACQUARIE 2444	
DRAWN BY:	AC	CLIENT:	CVC MEZZANINE FINANCE PTY LTD	
CHECKED BY:		DRAWING NO:	5350P_Mod Exhibits	
DATE CREATED:	JAN 2018	SHEET:	01	REVISION: C



AREA COMPARISON	
SITE AREA	48,294m2

PROPOSED BUNNINGS DEVELOPMENT - AREAS		
BUNNINGS WAREHOUSE GFA	18,407m2	88%
BG SHOWROOM	2400m2	12%
TOTAL DEVELOPMENT GFA	20,807m2	100%
SITE COVERAGE	43.0%	

ORIGINAL DA MASTERS - AREAS		
MASTERS GFA	13,484m2	66%
TENANCIES GFA	6864m2	34%
TOTAL DEVELOPMENT GFA	20,348m2	100%
SITE COVERAGE	42%	

CARPARK COMPARISON

PROPOSED BUNNINGS DEVELOPMENT - CARPARKS	
DISABLED	12
CARPARKS	441
TRAILER BAYS	4
TOTAL CARPARKS	457
TROLLEY BAYS	7

ORIGINAL DA MASTERS - CARPARKS	
DISABLED	15
CARPARKS	505
TRAILER BAYS	3
TOTAL CARPARKS	523

22.03.18	H	REVISED ISSUED FOR S96; BULK TRADE WALL TYPES REVISED; PRECAST FEATURE ADDED TO NURSERY AND BULKY FACADE; CARPARKING NUMBERS AND FLOOR AREAS UPDATED	JB/TV
21.02.18	G	REVISED ISSUED FOR S96; BULK TRADE; BAGGED GOODS & REAR WALL HEIGHTS UPDATED	JB
19.02.18	F	REVISED ISSUED FOR S96; GOODS INWARDS FENCE & GATE ADDED; ARMCO BARRIER VISIBLE CLEARANCE UPDATED	JB
16.02.18	E	REVISED ISSUED FOR S96; BULK TRADE & BULKY ROOF REVISED; ARMCO BARRIER UPDATED	JB
15.02.18	D	REVISED ISSUED FOR S96; BULK TRADE CANOPY REVISED; REVISED TO BUNNINGS BACK PLAN RPS; D1 A INCLUDING; REVISED ACCESS TO TRADE OFFICE; TRADE AMENITIES ADDED; SLIDING GATE ADDED FROM GOODS INWARDS TO BULK TRADE	JB
25.01.18	C	ISSUED FOR S96	JB
11.01.18	B	PRELIMINARY ISSUE	JB
13.12.17	A	PRELIMINARY ISSUE	JB
DATE	REV	AMENDMENT	BY

CONTRACTOR TO CHECK ALL DIMENSIONS ON SITE BEFORE COMMENCING ANY WORK OR PREPARING ANY SHOP DRAWINGS

©

UNLESS OTHERWISE AGREED THIS DRAWING AND THE INTELLECTUAL PROPERTY CONTAINED HERE ON REMAINS THE PROPERTY OF



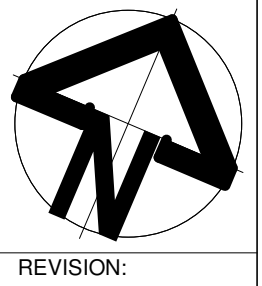
ARCHITECT:

Michael Carr Architect Pty. Ltd.

88 Tope Street, South Melbourne 3205
Ph 03 9646 5635 Fax 03 9686 6264
Email admin@mcararchitect.com.au

ARCHITECTURAL	
PROJECT:	BUNNINGS WAREHOUSE OXLEY HIGHWAY PORT MACQUARIE, NSW 2444
DRAWING TITLE:	DEVELOPMENT UPGRADE

SCALE:	As indicated@ A0	PROJECT No:	17018
DATE:	07.12.17	VERIFICATION:	THIS DRAWING HAS BEEN REVIEWED & VERIFIED BY:
FILE:		DESIGNED:	
DRAWN:	JB	DRAWING No:	AA0-00
CHECKED:	MC	REVISION:	H



PRELIMINARY



LOCALITY PLAN
1:1500@A0



OVERALL SITE PLAN
1:500@A0

PRELIMINARY

DATE	REV	AMENDMENT	BY
22.03.18	G	REVISED ISSUED FOR S96 BULK TRADE WALL TYPES REVISED, PRECAST FEATURE ADDED TO NURSERY AND BULKY FACADE, CARPARKING NUMBERS AND FLOOR AREAS UPDATED	JB/TV
21.02.18	F	REVISED ISSUED FOR S96 BULK TRADE, BAGGED GOODS & REAR WALL HEIGHTS UPDATED	JB
19.02.18	E	REVISED ISSUED FOR S96 GOODS INWARDS FENCE & DATE ADDED, ARMACO BARRIER AISLE CLEARANCE UPDATED	JB
18.02.18	D	REVISED ISSUED FOR S96 BULK TRADE & BULKY ROOF REVISED, ARMACO BARRIER UPDATED	JB
15.02.18	C	REVISED ISSUED FOR S96 BULK TRADE CANOPY REVISED, REVISED TO BUNNINGS RACK PLAN (RIP) (P) A INCLUDING REVISED ACCESS TO TRADE OFFICE, TRADE AMENITIES ADDED, SLIDING GATE ADDED FROM GOODS INWARDS TO BULK TRADE	JB
25.01.18	B	ISSUED FOR S96	JB
11.01.18	A	PRELIMINARY ISSUE	JB

CONTRACTOR TO CHECK ALL DIMENSIONS ON SITE BEFORE COMMENCING ANY WORK OR PREPARING ANY SHOP DRAWINGS

©

UNLESS OTHERWISE AGREED THIS DRAWING AND THE INTELLECTUAL PROPERTY CONTAINED HEREON REMAINS THE PROPERTY OF



ARCHITECT:

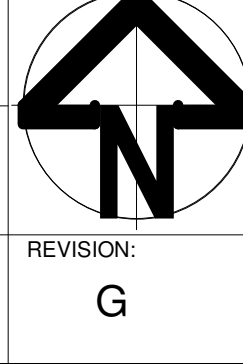
Michael Carr Architect Pty Ltd

88 Tope Street, South Melbourne 3205
Ph 03 9646 5635 Fax 03 9686 4064
Email admin@mcararchitect.com.au

ARCHITECTURAL	
PROJECT:	BUNNINGS WAREHOUSE OXLEY HIGHWAY PORT MACQUARIE, NSW 2444
DRAWING TITLE:	OVERALL SITE & LOCALITY PLAN

SCALE:	As indicated@ A0
DATE:	07.12.17
FILE:	
DESIGNED:	
DRAWN:	JB/CY
CHECKED:	MC

PROJECT No:	17018
VERIFICATION:	THIS DRAWING HAS BEEN REVIEWED & VERIFIED BY:
DRAWING No:	AA0-01



REVISION: G

PROPOSED BUNNINGS DEVELOPMENT - AREAS

SITE AREA 48,294m²

GROSS FLOOR AREAS

MAIN WAREHOUSE	9098m ²
OUTDOOR NURSERY	1390m ²
BAGGED GOODS CANOPY	1661m ²
TIMBER TRADE SALES	2669m ²
BUILDING MATERIALS & LANDSCAPE YARD	1443m ²
BULK TRADE	2011m ²
MAIN ENTRY	78m ²
GARDEN CENTRE ENTRY	57m ²

BUNNINGS WAREHOUSE GFA 18,407m² 88%

BG SHOWROOM 2400m² 12%

TOTAL DEVELOPMENT GFA 20,807m² 100%

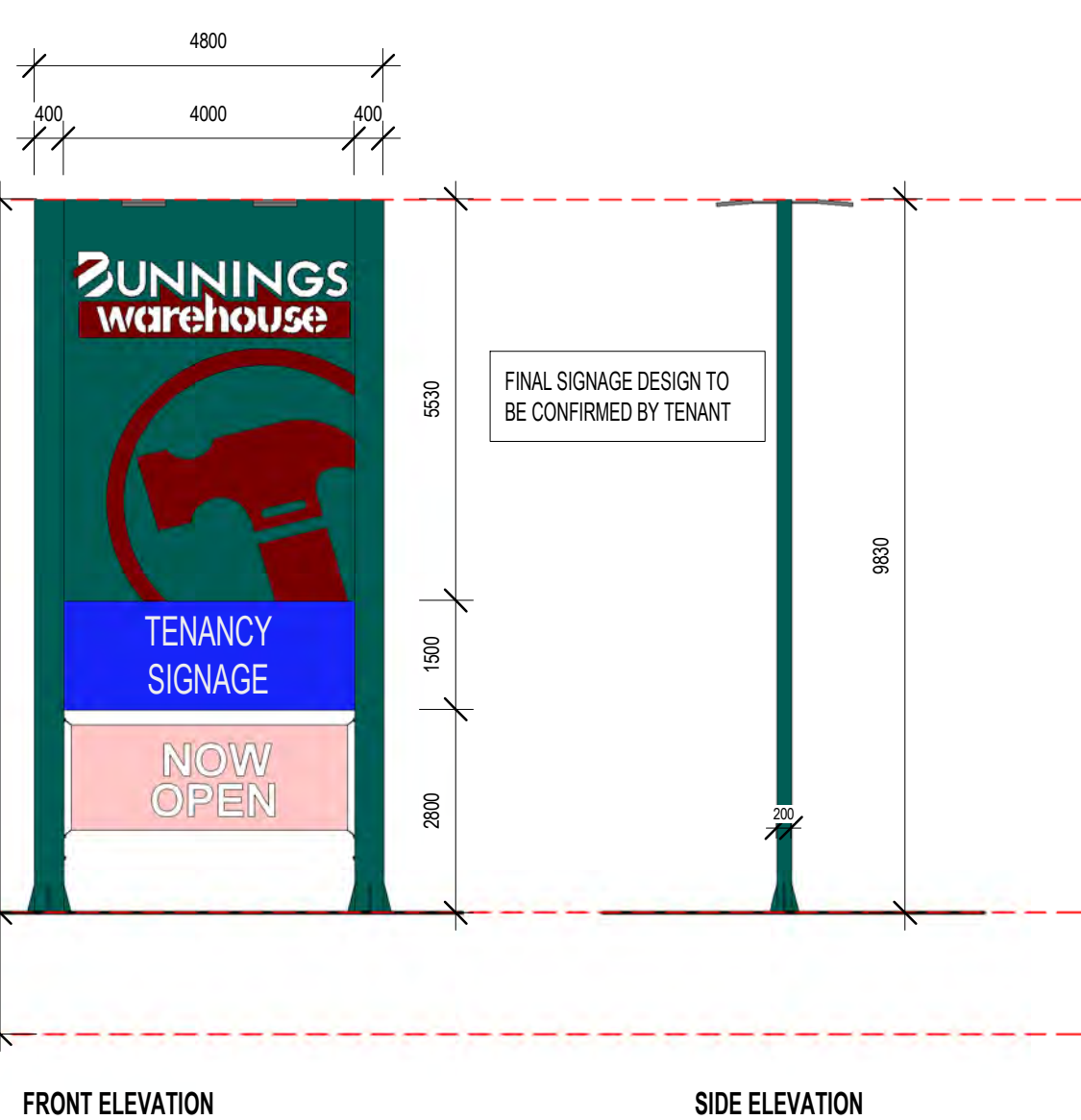
SITE COVERAGE 43.0%

CARPARK SCHEDULE

DISABLED	12
CARPARKS	441
TRAILER BAYS	4
TOTAL CARPARKS	457
TROLLEY BAYS	7

NOTE: INTERNAL TIMBER TRADE SALES
CARPARKS NOT INCLUDED

SITE PLAN
1: 400@ A0

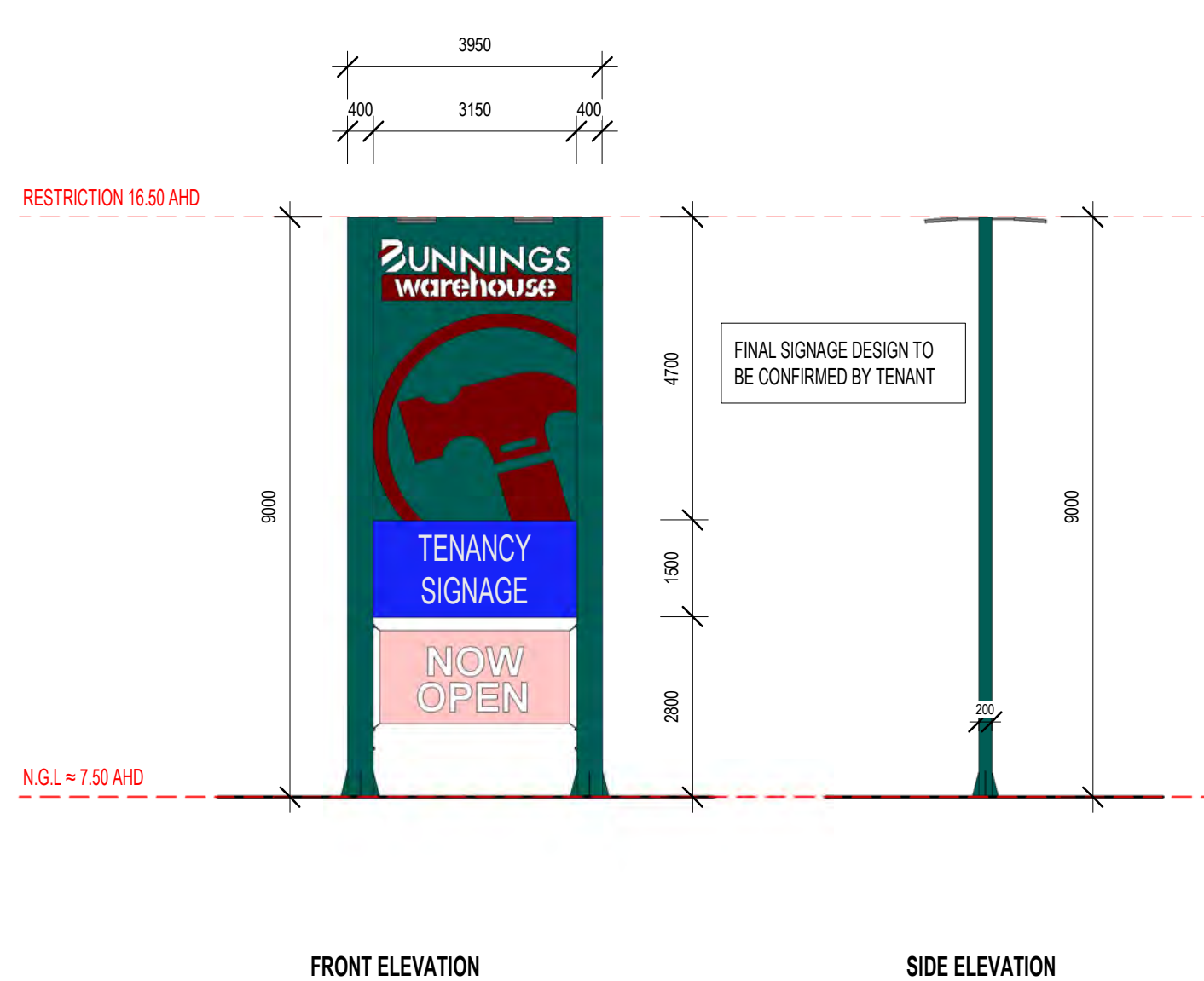


FRONT ELEVATION

SIDE ELEVATION

PYLON 1

PYLON SIGN DETAIL
1: 100@ A0



FRONT ELEVATION

SIDE ELEVATION

PYLON 2

22.03.18	Q	REVISED ISSUED FOR S96; BULK TRADE WALL TYPES REVISED; PRECAST FEATURE ADDED TO NURSERY AND B&M Y FACADE; CARPARKING NUMBERS AND FLOOR AREAS UPDATED	JB/TV
21.02.18	P	REVISED ISSUED FOR S96; BULK TRADE; BAGGED GOODS & REAR WALL HEIGHTS UPDATED	JB
19.02.18	N	REVISED ISSUED FOR S96; GOODS INWARDS FENCE & GATE ADDED; ARMO BARRIER ASBLE CLEARANCE UPDATED	JB
16.02.18	M	REVISED ISSUED FOR S96; BULK TRADE & B&M Y ROOF REVISED; ARMO BARRIER UPDATED	JB
15.02.18	L	REVISED ISSUED FOR S96; BULK TRADE CANOPY REVISED; REVISED TO BUNNINGS BACK PLAN RPS OF A INCLUDING; REVISED ACCESS TO TRADE OFFICE; TRADE AMENITIES ADDED; SLIDING GATE ADDED FROM GOODS INWARDS TO BULK TRADE	JB
25.01.18	K	ISSUED FOR S96	JB
23.01.18	J	PRELIMINARY ISSUE	JB
17.01.18	H	PRELIMINARY ISSUE	JB
DATE	REV	AMENDMENT	BY

CONTRACTOR TO CHECK ALL
DIMENSIONS ON SITE BEFORE
COMMENCING ANY WORK OR
PREPARING ANY SHOP
DRAWINGS

UNLESS OTHERWISE AGREED
THIS DRAWING AND THE
INTELLECTUAL PROPERTY
CONTAINED HERE ON
REMAINS THE PROPERTY OF



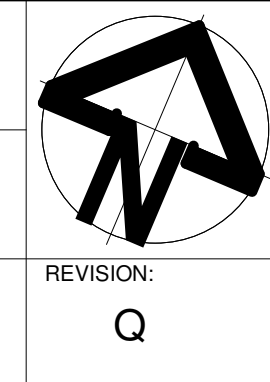
ARCHITECT:
Michael Carr Architect Pty. Ltd.
88 Tope Street, South Melbourne 3205
PH 03 9646 5633 Fax 03 9688 4084
Email admin@mcararchitect.com.au

PROJECT:
**BUNNINGS WAREHOUSE
OXLEY HIGHWAY
PORT MACQUARIE, NSW 2444**

ARCHITECTURAL
DRAWING TITLE:
SITE PLAN

SCALE: As indicated@ A0
DATE: 07.12.17
FILE:
DESIGNED:
DRAWN: JB/KW
CHECKED: MC

PROJECT No:
17018
VERIFICATION:
THIS DRAWING HAS BEEN REVIEWED &
VERIFIED BY:
DRAWING No:
AA1-01



PRELIMINARY

OVERALL FLOOR PLAN PART A
1:200@A0

PRELIMINARY

22.02.18	G	REVISED ISSUED FOR S96 BULK TRADE WALL TYPES REVISED, PRECAST FEATURE ADDED TO NURSERY AND BMLY FACADE, CARPARKING NUMBERS AND FLOOR AREAS UPDATED	JB/TV
21.02.18	F	REVISED ISSUED FOR S96 BULK TRADE, BAGGED GOODS & REAR WALL HEIGHTS UPDATED	JB
19.02.18	E	REVISED ISSUED FOR S96 GOODS INWARDS FENCE & DATE ADDED, ARMACO BARRIER AISLE CLEARANCE UPDATED	JB
18.02.18	D	REVISED ISSUED FOR S96 BULK TRADE & BMLY ROOF REVISED, ARMACO BARRIER UPDATED	JB
15.02.18	C	REVISED ISSUED FOR S96 BULK TRADE CANOPY REVISED, REVISED TO BUNNINGS RACK PLAN (PPN) (P) A INCLUDING REVISED ACCESS TO TRADE OFFICE, TRADE AMENITIES ADDED, SLIDING GATE ADDED FROM GOODS INWARDS TO BULK TRADE	JB
25.01.18	B	ISSUED FOR S96	JB
11.01.18	A	PRELIMINARY ISSUE	JB
DATE	REV	AMENDMENT	BY

CONTRACTOR TO CHECK ALL DIMENSIONS ON SITE BEFORE COMMENCING ANY WORK OR PREPARING ANY SHOP DRAWINGS

©

UNLESS OTHERWISE AGREED THIS DRAWING AND THE INTELLECTUAL PROPERTY CONTAINED HEREON REMAINS THE PROPERTY OF



ARCHITECT:

Michael Carr Architect Pty. Ltd.

88 Tope Street, South Melbourne 3205
PH 03 9545 5435 Fax 03 9588 4204
Email admin@mcararchitect.com.au

PROJECT:
BUNNINGS WAREHOUSE
OXLEY HIGHWAY
PORT MACQUARIE, NSW 2444

ARCHITECTURAL

DRAWING TITLE:
OVERALL FLOOR PLAN PART A

SCALE: 1:200@A0

DATE: 07.12.17

FILE:

DESIGNED: -

DRAWN: JB

CHECKED: MC

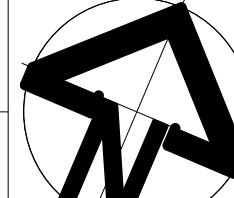
PROJECT No:

17018

VERIFICATION: THIS DRAWING HAS BEEN REVIEWED & VERIFIED BY:

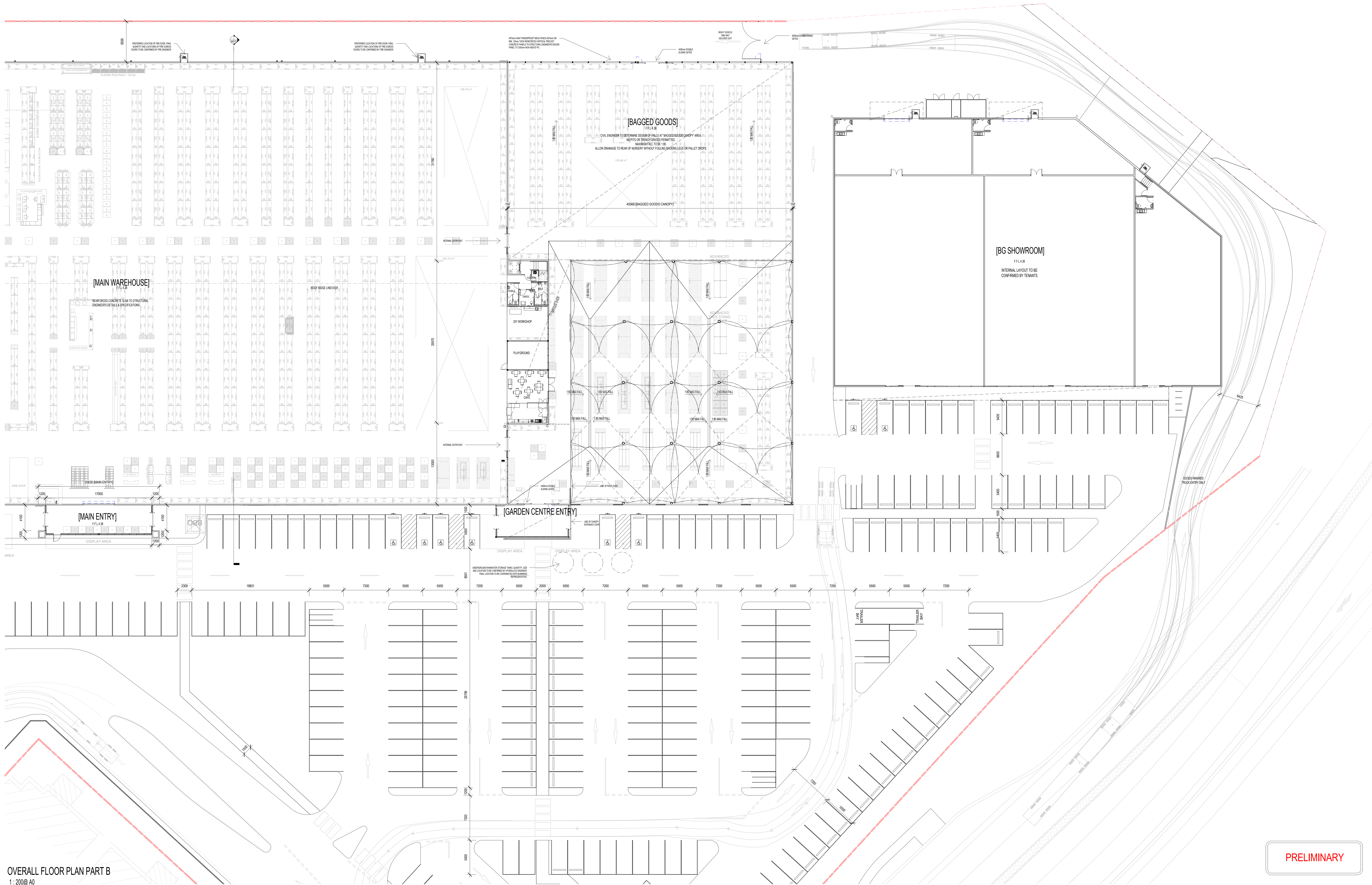
DRAWING No:

AA2-01A



REVISION:

G



OVERALL FLOOR PLAN PART B
1:200@A0

PRELIMINARY

DATE	REV	AMENDMENT	BY
22.03.18	G	REVISED ISSUED FOR S96 BULK TRADE WALL TYPES REVISED, PRECAST FEATURE ADDED TO NURSERY AND BULKY FACADE, CARPARKING NUMBERS AND FLOOR AREAS UPDATED	JB/TV
21.02.18	F	REVISED ISSUED FOR S96 BULK TRADE BAGGED GOODS & REAR WALL HEIGHTS UPDATED	JB
19.02.18	E	REVISED ISSUED FOR S96 GOODS INWARDS FENCE & DATE ADDED, ARMCO BARRIER AISLE CLEARANCE UPDATED	JB
18.02.18	D	REVISED ISSUED FOR S96 BULK TRADE & BULKY ROOF REVISED, ARMCO BARRIER UPDATED	JB
15.02.18	C	REVISED ISSUED FOR S96 BULK TRADE CANOPY REVISED, REVISED TO BUNNINGS RACK PLAN (PP) OF A INCLUDING REVISED ACCESS TO TRADE OFFICE, TRADE AMENITIES ADDED, SLIDING GATE ADDED FROM GOODS INWARDS TO BULK TRADE	JB
25.01.18	B	ISSUED FOR S96	JB
11.01.18	A	PRELIMINARY ISSUE	JB

CONTRACTOR TO CHECK ALL DIMENSIONS ON SITE BEFORE COMMENCING ANY WORK OR PREPARING ANY SHOP DRAWINGS

UNLESS OTHERWISE AGREED THIS DRAWING AND THE INTELLECTUAL PROPERTY CONTAINED HERE ON REMAINS THE PROPERTY OF



ARCHITECT:

Michael Carr Architect Pty Ltd

88 Tope Street, South Melbourne 3205
Ph 03 9646 5635 Fax 03 9686 4264
Email admin@mcararchitect.com.au

PROJECT:

**BUNNINGS WAREHOUSE
OXLEY HIGHWAY
PORT MACQUARIE, NSW 2444**

ARCHITECTURAL

DRAWING TITLE:

OVERALL FLOOR PLAN PART B

SCALE: 1:200@A0

DATE: 07.12.17

FILE:

DESIGNED: -

DRAWN: JB

CHECKED: MC

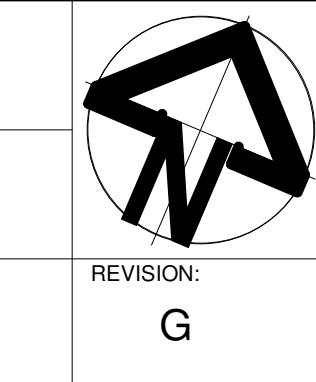
PROJECT No:

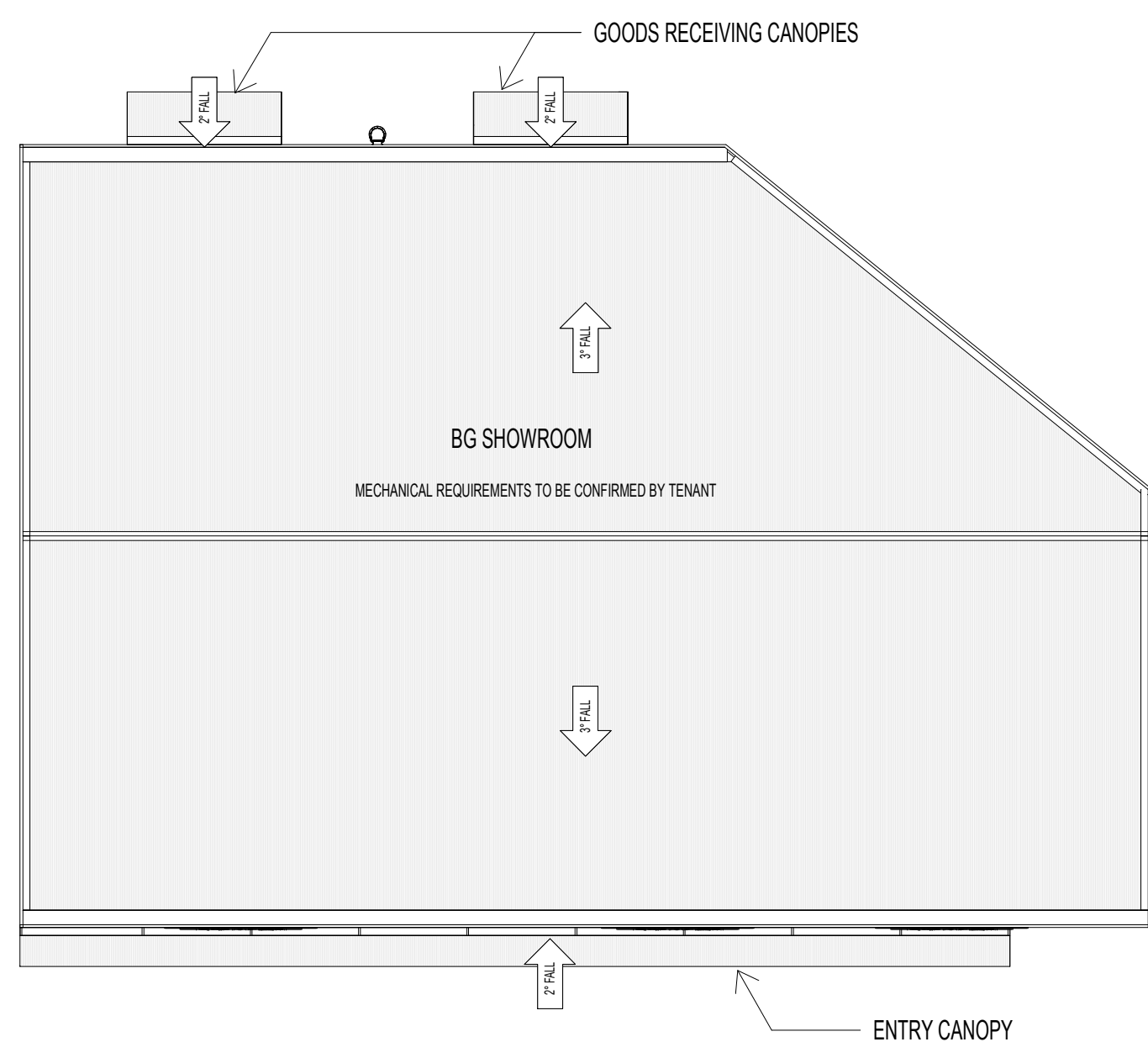
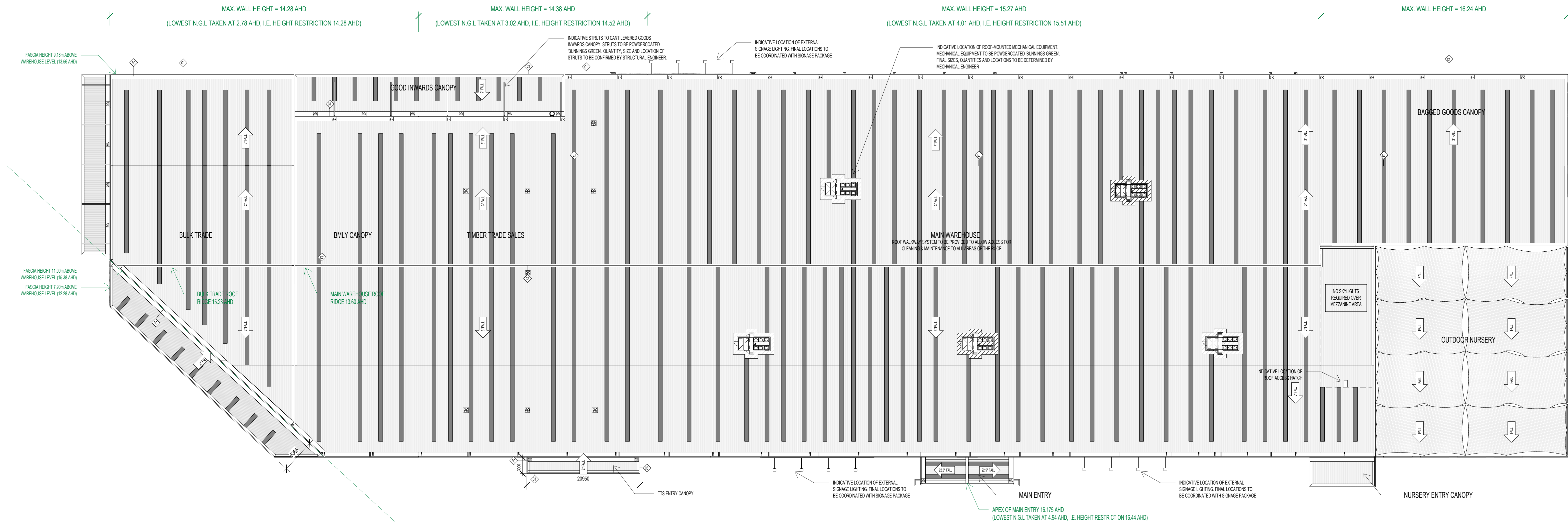
17018

VERIFICATION: THIS DRAWING HAS BEEN REVIEWED & VERIFIED BY:

DRAWING No:

AA2-01B





ROOF PLAN
1 : 350@ A0

PRELIMINARY

ROOF FINISHES SCHEDULE

NOTE: ROOF AND ROOF FLASHING TO BE DESIGNED FOR 1 IN 10 YEAR RAINFALL INTENSITY. SIZES NOMINATED ON THIS SCHEDULE ARE MINIMUM REQUIREMENTS ONLY.	
	MATERIAL: ZINCALUME STEEL ROOF SHEETING TO FALLS NOMINATED TO GUTTERS. COLOUR: NA
	MATERIAL: TRANSLUCENT ROOF SHEETING COLOUR: OPA NOTES: SEE OUT OF SKYLIGHT SHEETING IS INDICATIVE ONLY.
	MATERIAL: SHADE SAIL FINISH: NA COLOUR: WHITE NOTES: SHADE PANELS ARE TO BE ANGLED IN A SHADETOOTH PROFILE SO THAT LOW CONNECTIONS ARE ON THE SOUTHERN EDGE AND HIGH CONNECTIONS ARE TO THE NORTH. ALL OPENINGS BETWEEN CANOPIES SHOULD NOT EXCEED 3m AT THE WIDEST POINT.
	MATERIAL: ROOF MOUNTED COOLING UNIT FINISH: NA COLOUR: POWDERCOAT FINISHES GREEN WHERE VISIBLE AT GROUND LEVEL. NOTES: LOCATION, SIZE AND QUANTITY OF UNITS ARE INDICATIVE ONLY. MECHANICAL ENGINEER TO DETERMINE SPECIFIC REQUIREMENTS.
	MATERIAL: ROOF MOUNTED FAN FINISH: NA COLOUR: NA NOTES: REFER TO MECHANICAL DRAWINGS FOR DETAILS.
	MATERIAL: MINIMUM 600mm x 800mm x 250mm DEEP DRAIN FINISH: ZINCALUME COLOUR: NA NOTES: PROVIDE STRAINERS AND 200mm x 100mm OVERFLOW OUTLETS. CONNECT TO MIN. 150mm Ø DOWNPIPES. USE DRAINAGE HEADS WHERE COMPARTS ARE RUN EXTERNALLY. FINAL SIZE TO BE DETERMINED BY HYDRAULIC ENGINEER.
	ITEM: PROVIDE NOM 300mm x 300mm SIPHONIC OUTLET NOTES: REFER TO MECHANICAL ENGINEERS DRAWING FOR SITE SPECIFIC DETAILS FINISH: ON LOCATION, QUANTITY AND SIZES INTERNAL EXPOSED HOPE PROPORION TO BE PAINTED WHITE.
	MATERIAL: PARAPET AND FASCIA CAPPING FINISH: COLORBOND COLOUR: R9P - LUSTA GREEN
	MATERIAL: RIDGE CAPPING FINISH: ZINCALUME COLOUR: NA
	MATERIAL: ENTRY GABLE BARGE CAPPING AND MAIN ENTRY PER CAPPING FINISH: POWDERCOAT COLOUR: DULUX SHADE REF 8714 - FINISHES STUCCO NOTES: PER CAPPING TO BE RAISED MIN. 30mm AT CENTRE TO PREVENT PONDING.
	MATERIAL: BOX GUTTERS FINISH: ZINCALUME COLOUR: NA NOTES: GUTTERS TO BE CONSTRUCTED TO ALLOW DURABLE FOOT TRAFFIC ALONG ENTIRE LENGTH OF GUTTER FOR MAINTENANCE PURPOSES. GUTTERS TO BE FITTED WITH LEAF GUARDS WHERE LOCATED WITHIN CLOSE PROXIMITY OF DOWNPipes. FINAL SIZE TO BE DETERMINED BY HYDRAULIC ENGINEER.

22.03.18	H	REVISED ISSUED FOR S96, BULK TRADE WALL TYPES REVISED, PRECAST FEATURE ADDED TO NURSERY AND BULKY FACADE. CARPARKING NUMBERS AND FLOOR AREAS UPDATED.	JB	TB
21.02.18	G	REVISED ISSUED FOR S96, BULK TRADE, BAGGED GOODS & REAR WALL HEIGHTS UPDATED.	JB	
19.02.18	F	REVISED ISSUED FOR S96, GOODS INWARDS FENCE & GATE ADDED, APRNCO BARRIER AISLE CLEARANCE UPDATED.	JB	
16.02.18	E	REVISED ISSUED FOR S96, BULK TRADE & BULKY ROOF REVISED, APRNCO BARRIER UPDATED.	JB	
15.02.18	D	REVISED ISSUED FOR S96, BULK TRADE CANOPY REVISED, REVISED TO BUNNINGS RACK PLAN RPO 01. A INCLUDING, REVISED ACCESS TO TRADE OFFICE, TRADE AMENITIES ADDED, SLIDING GATE, ADDED FROM GOODS INWARDS TO BULK TRADE.	JB	
25.01.18	C	ISSUED FOR S96	JB	
11.01.18	B	PRELIMINARY ISSUE	JB	
20.12.17	A	PRELIMINARY ISSUE	JB	
DATE	REV	AMENDMENT	BY	

CONTRACTOR TO CHECK ALL DIMENSIONS ON SITE BEFORE COMMENCING ANY WORK OR PREPARING ANY SHOP DRAWINGS

UNLESS OTHERWISE AGREED THIS DRAWING AND THE INTELLECTUAL PROPERTY CONTAINED HEREON REMAINS THE PROPERTY OF



ARCHITECT:

Michael Carr Architect Pty Ltd

88 Tape Street, South Melbourne 3205
Ph 03 9645 5033 Fax 03 9698 4084
Email admin@mcararchitect.com.au

PROJECT:

**BUNNINGS WAREHOUSE
OXLEY HIGHWAY
PORT MACQUARIE, NSW 2444**

DRAWING TITLE:

ROOF PLAN

SCALE:

1 : 350@ A0

DATE:

07.12.17

FILE:

DESIGNED:

DRAWN:

CHECKED:

JB

MC

PROJECT No:

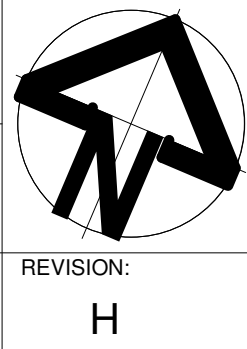
17018

VERIFICATION:

THIS DRAWING HAS BEEN REVIEWED & VERIFIED BY:

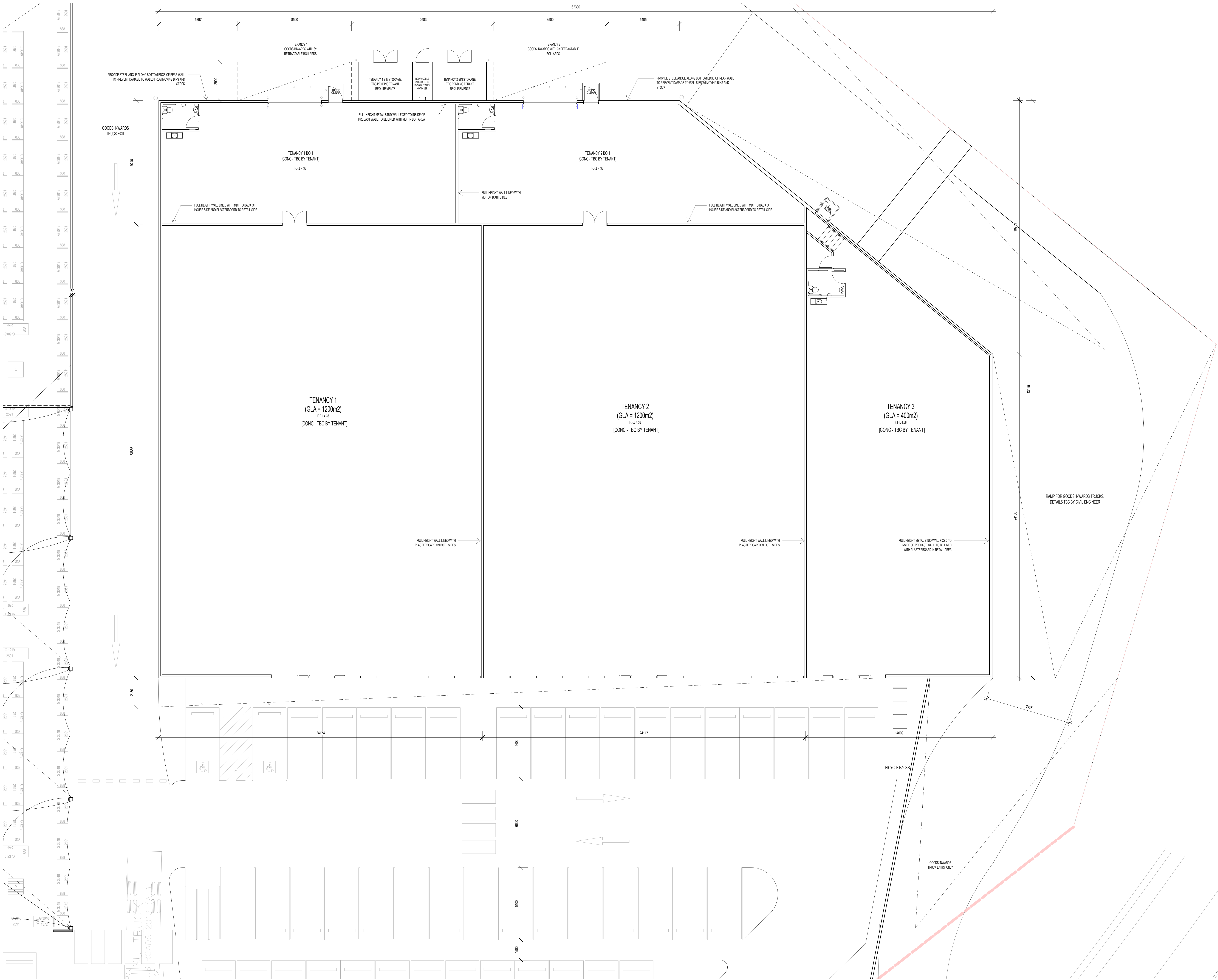
DRAWING No:

AA2-02



REVISION:

H



REFER TO A42-01B FOR CONTINUATION

TENANCY FLOOR PLAN
1 : 100@A0

DATE	REV	ISSUED FOR	AMENDMENT	BY
22.03.18	A	ISSUED FOR 596		JB/TV

CONTRACTOR TO CHECK ALL DIMENSIONS ON SITE BEFORE COMMENCING ANY WORK OR PREPARING ANY SHOP DRAWINGS

UNLESS OTHERWISE AGREED THIS DRAWING AND THE INTELLECTUAL PROPERTY CONTAINED HERE ON REMAINS THE PROPERTY OF



ARCHITECT:

Michael Carr Architect Pty. Ltd.

88 Tope Street, South Melbourne 3206
Ph 03 9646 5635 Fax 03 9686 4064
Email admin@mcararchitect.com.au

PROJECT:

**BUNNINGS WAREHOUSE
OXLEY HIGHWAY
PORT MACQUARIE, NSW 2444**

ARCHITECTURAL

DRAWING TITLE:

TENANCY PLAN

SCALE: 1 : 100@ A0

DATE: 07.12.17

FILE:

DESIGNED: Designer

DRAWN: Author

CHECKED: Checker

PROJECT No:

17018

VERIFICATION: THIS DRAWING HAS BEEN REVIEWED & VERIFIED BY:

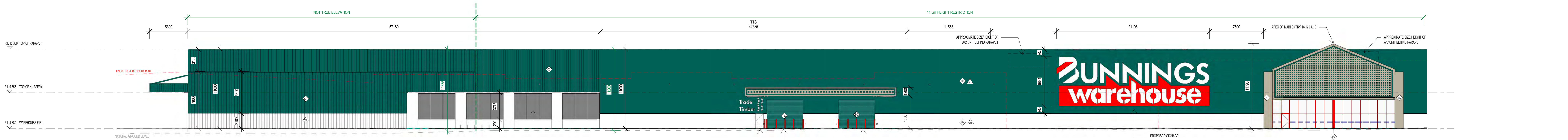
DRAWING No:

AA2-03

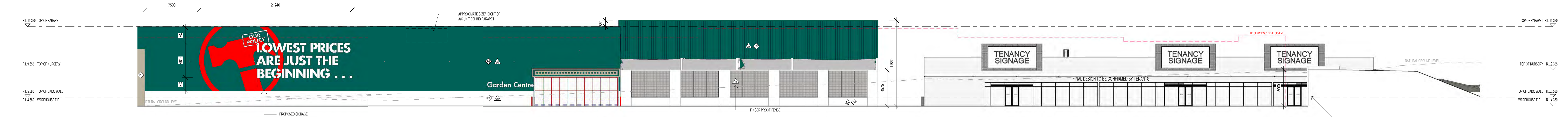
REVISION:

A

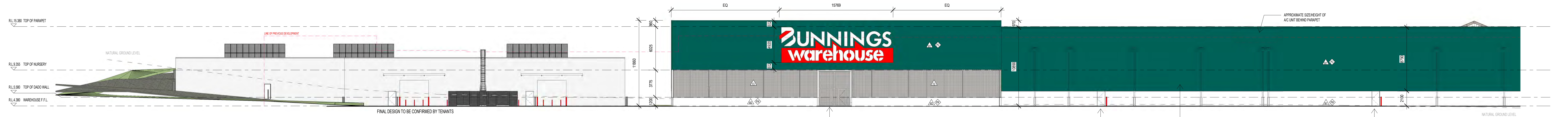
PRELIMINARY



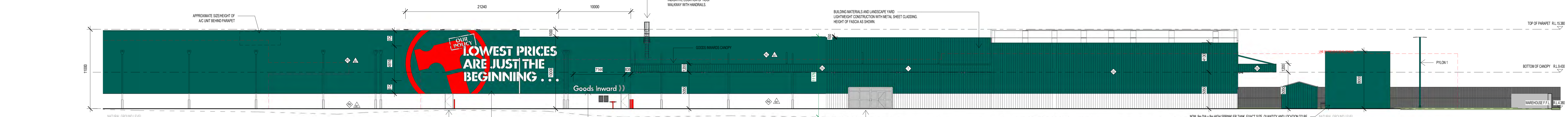
SOUTH EAST ELEVATION (FRONT)
1:200@A0



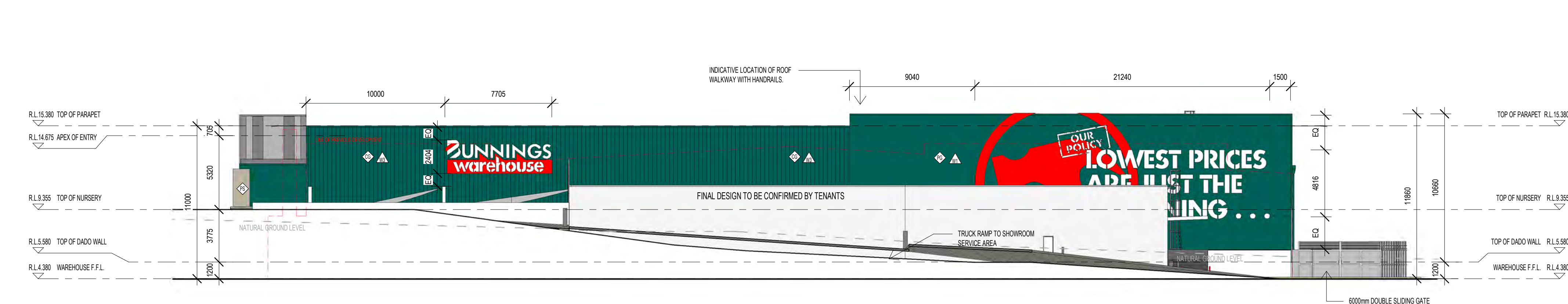
CONT. OF SOUTH EAST ELEVATION (FRONT)
1:200@A0



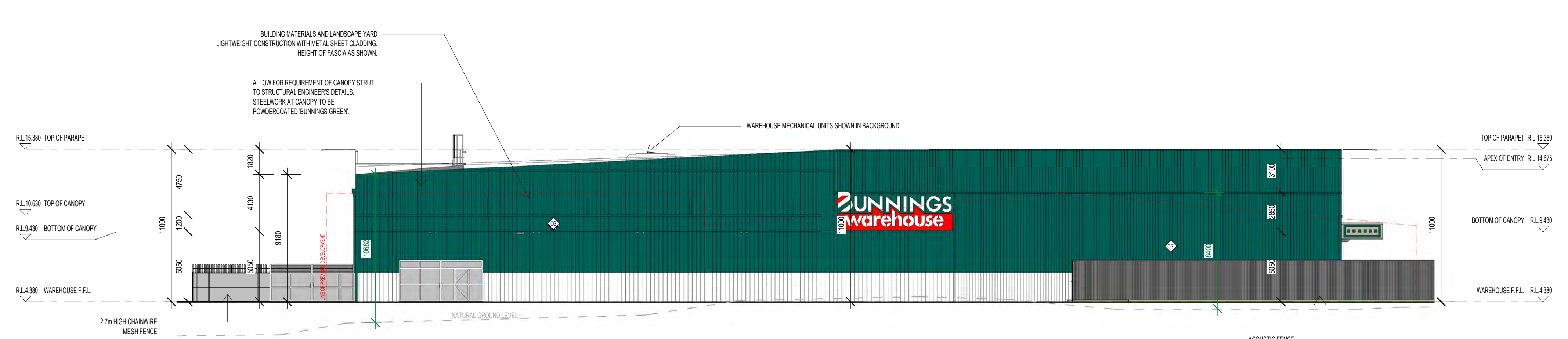
NORTH WEST ELEVATION (REAR)
1:200@A0



CONT. OF NORTH WEST ELEVATION (REAR)
1:200@A0



NORTH EAST ELEVATION (SIDE - SHOWROOM)
1:200@A0



SOUTH WEST ELEVATION (SIDE - BUILDING MATERIALS & LANDSCAPE YARD)
1:200@A0

ELEVATION & SECTIONS FINISHES SCHEDULE		
FINISH	FINISH	FINISH
PD	FINISH: PAINT	FINISH: PAINT
	COLOR: DALLAS SHADE REF. 8744 - 'BUNNINGS RED'	
FS	FINISH: PAINT	FINISH: PAINT
	COLOR: DALLAS SHADE REF. 8744 - 'BUNNINGS STUCCO'	
PD	FINISH: PAINT	FINISH: PAINT
	COLOR: DALLAS SHADE REF. 8745 - 'BUNNINGS BUILDING GREEN'	
PD	FINISH: PAINT	FINISH: PAINT
	COLOR: DALLAS SHADE REF. 8746 - 'BUNNINGS BUILDING WHITE'	
FS	FINISH: GALVANNEED	FINISH: GALVANNEED
	COLOR: BHP - 'CATTAL GREEN'	
CD	FINISH: COLORBOND	FINISH: COLORBOND
	COLOR: BHP - 'CATTAL GREEN'	
CR	FINISH: COLORBOND	FINISH: COLORBOND
	COLOR: THREEBO WHITE	

FENCE SCHEDULE		
FINISH	FINISH	FINISH
PD	FINISH: PAINT	FINISH: PAINT
	COLOR: DALLAS SHADE REF. 8744 - 'BUNNINGS RED'	
FS	FINISH: PAINT	FINISH: PAINT
	COLOR: DALLAS SHADE REF. 8744 - 'BUNNINGS STUCCO'	
PD	FINISH: PAINT	FINISH: PAINT
	COLOR: DALLAS SHADE REF. 8745 - 'BUNNINGS BUILDING GREEN'	
PD	FINISH: PAINT	FINISH: PAINT
	COLOR: DALLAS SHADE REF. 8746 - 'BUNNINGS BUILDING WHITE'	
FS	FINISH: GALVANNEED	FINISH: GALVANNEED
	COLOR: BHP - 'CATTAL GREEN'	
CD	FINISH: COLORBOND	FINISH: COLORBOND
	COLOR: BHP - 'CATTAL GREEN'	
CR	FINISH: COLORBOND	FINISH: COLORBOND
	COLOR: THREEBO WHITE	

WALL SCHEDULE		
FINISH	FINISH	FINISH
PD	FINISH: PAINT	FINISH: PAINT
	COLOR: DALLAS SHADE REF. 8744 - 'BUNNINGS RED'	
FS	FINISH: PAINT	FINISH: PAINT
	COLOR: DALLAS SHADE REF. 8744 - 'BUNNINGS STUCCO'	
PD	FINISH: PAINT	FINISH: PAINT
	COLOR: DALLAS SHADE REF. 8745 - 'BUNNINGS BUILDING GREEN'	
PD	FINISH: PAINT	FINISH: PAINT
	COLOR: DALLAS SHADE REF. 8746 - 'BUNNINGS BUILDING WHITE'	
FS	FINISH: GALVANNEED	FINISH: GALVANNEED
	COLOR: BHP - 'CATTAL GREEN'	
CD	FINISH: COLORBOND	FINISH: COLORBOND
	COLOR: BHP - 'CATTAL GREEN'	
CR	FINISH: COLORBOND	FINISH: COLORBOND
	COLOR: THREEBO WHITE	

DATE	REV	AMENDMENT	BY
22.03.18	K	REVISED ISSUED FOR S96; BULK TRADE WALL TYPES REVISED; PRECAST FEATURE ADDED TO NURSERY AND BULKY FRACAGE; CARPARKING NUMBERS AND FLOOR AREAS UPDATED	JB
21.02.18	J	REVISED ISSUED FOR S96; BULK TRADE; BAGGED GOODS & REAR WALL HEIGHTS UPDATED	JB
19.02.18	H	REVISED ISSUED FOR S96; GOODS INWARDS FENCE & GATE ADDED; ARMO BARRIER VISIBLE CLEARANCE UPDATED	JB
16.02.18	G	REVISED ISSUED FOR S96; BULK TRADE & BULKY ROOF REVISED; ARMO BARRIER UPDATED	JB
15.02.18	F	REVISED ISSUED FOR S96; BULK TRADE CANOPY REVISED; REVISED TO BUNNINGS BACK PLAN RPS. OF A INCLUDING; REVISED ACCESS TO TRADE OFFICE; TRADE AMENITIES ADDED; SLIDING GATE ADDED FROM GOODS INWARDS TO BULK TRADE	JB
25.01.18	E	ISSUED FOR S96	JB
18.01.18	D	PRELIMINARY ISSUE	JB
11.01.18	C	PRELIMINARY ISSUE	JB

CONTRACTOR TO CHECK ALL DIMENSIONS ON SITE BEFORE COMMENCING ANY WORK OR PREPARING ANY SHOP DRAWINGS
UNLESS OTHERWISE AGREED THIS DRAWING AND THE INTELLECTUAL PROPERTY CONTAINED HEREIN REMAINS THE PROPERTY OF



ARCHITECT:	Michael Carr Architect Pty. Ltd.
88 Tote Street, South Melbourne 3205 Ph 03 9646 5633 Fax 03 9686 4064 Email admin@mccarchitect.com.au	

PROJECT:	BUNNINGS WAREHOUSE OXLEY HIGHWAY PORT MACQUARIE, NSW 2444
----------	---



ARCHITECTURAL ELEVATIONS

SCALE: 1:200@A0	PROJECT No: 17018
DATE: 07.12.17	VERIFICATION: THIS DRAWING HAS BEEN REVIEWED & VERIFIED BY:
FILE:	DRAWING No: AA4-01
DESIGNED: JB/CY	REVISION: K
DRAWN: JB/CY	
CHECKED: MC	

WALL SCHEDULE

ELEVATION & SECTIONS

FINISHES SCHEDULE

	FINISH: PAINT COLOUR: DULUX SHADE REF. SW914 - 'NATURAL WHITE'
	FINISH: GALVANISED COLOUR: NATURAL

PRELIMINARY

[illegible]

CONTRACTOR TO CHECK ALL
DIMENSIONS ON SITE BEFORE
COMMENCING ANY WORK OR
PREPARING ANY SHOP
DRAWINGS

UNLESS OTHERWISE AGREED
THIS DRAWING AND THE
INTELLECTUAL PROPERTY
CONTAINED HERE ON
REMAINS THE PROPERTY OF:



ARCHITECT:

Michael Carr Architect Pty. Ltd.

68 Tope Street, South Melbourne 3206
Ph 03 9545 5635 Fax 03 9686 4084
Email admin@mcarchitect.com.au

ARCHITECTURAL

PROJECT:

BUNNINGS WAREHOUSE
OXLEY HIGHWAY
PORT MACQUARIE, NSW 2444

DRAWING TITLE:

TENANCY ELEVATIONS

SCALE: 1 : 100 @ A0

DATE: 07.12.17

FILE:

DESIGNED [®] Designer

DRAWN: Author

CHECKED: Checker

PROJECT No. _____

17018

VERIFICATION:
THIS DRAWING HAS BEEN REVIEWED AND

VERIFIED BY:

DRAWING No. _____

AA4-02

VISION:

A

22.03.18	O	REVISED ISSUED FOR S96 BULK TRADE WALL TYPES REVISED, PRECAST FEATURE ADDED TO NURSERY AND BULKY FACADE, CARPARKING NUMBERS AND FLOOR AREAS UPDATED	JB/TV
21.02.18	F	REVISED ISSUED FOR S96 BULK TRADE, BAGGED GOODS & REAR WALL HEIGHTS UPDATED	JB
19.02.18	E	REVISED ISSUED FOR S96 GOODS INWARDS FENCE & DATE ADDED, ARMO BARRIER AISLE CLEARANCE UPDATED	JB
18.02.18	D	REVISED ISSUED FOR S96 BULK TRADE & BULKY ROOF REVISED, ARMO BARRIER UPDATED	JB
15.02.18	C	REVISED ISSUED FOR S96 BULK TRADE CANOPY REVISED, REVISED TO BUNNINGS RACK PLAN (RIP) OF A INCLUDING REVISED ACCESS TO TRADE OFFICE, TRADE AMENITIES ADDED, SLIDING GATE ADDED FROM GOODS INWARDS TO BULK TRADE	JB
25.01.18	B	ISSUED FOR S96	JB
11.01.18	A	PRELIMINARY ISSUE	JB
DATE	REV	AMENDMENT	BY

CONTRACTOR TO CHECK ALL DIMENSIONS ON SITE BEFORE COMMENCING ANY WORK OR PREPARING ANY SHOP DRAWINGS

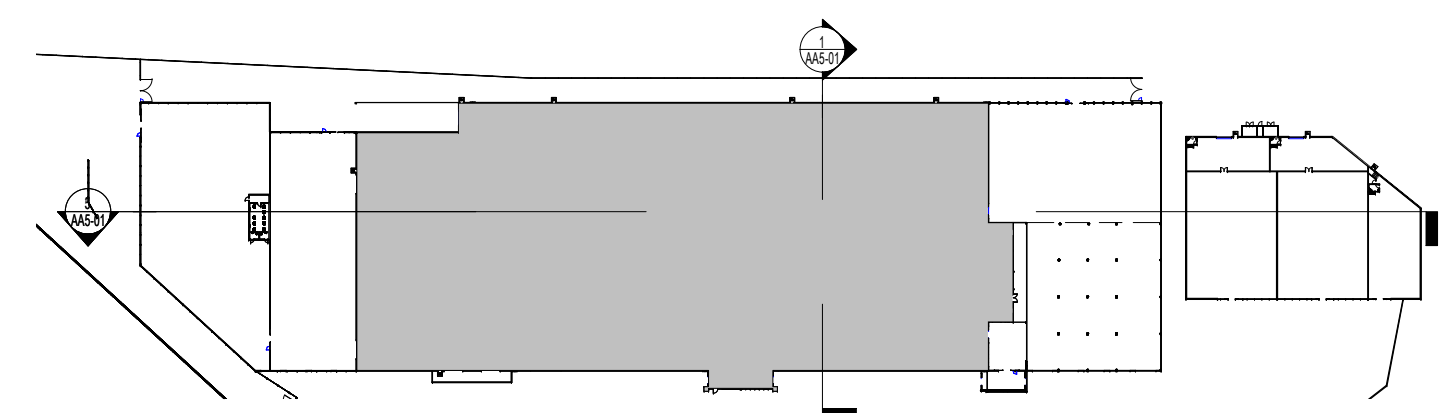
UNLESS OTHERWISE AGREED THIS DRAWING AND THE INTELLECTUAL PROPERTY CONTAINED HERE ON REMAINS THE PROPERTY OF



ARCHITECT:

Michael Carr Architect Pty. Ltd.

88 Tope Street, South Melbourne 3205
PH 03 9446 5433 Fax 03 9586 4004
Email admin@mcararchitect.com.au



WALL SCHEDULE	
	EXTERNAL CONCRETE WALLS MATERIAL: MIN. 150mm THICK REINFORCED VERTICAL PRECAST CONCRETE PANELS TO STRUCTURAL ENGINEER'S DESIGN WITH 1500mm AT 1000mm ABOVE FFL. REFER TO ELEVATIONS FOR NOMINATED WALL HEIGHTS. FINISH: STANDARD TREATMENT TO EXTERNAL FACE (SEAL AREAS BELOW PAINT) (TO BE COLOURED TO MATCH WALL AND F.F.L. SIDE WALL ONLY) GROUND TO 2100mm A.F.F.L. - BUNNINGS WHITE 2100mm TO HEIGHTS NOMINATED - BUNNINGS GREY NOTES: A TENSILE TREATMENT TO THE EXTERNAL SURFACES OUTDOOR NURSERY, BAGGED GOODS & BUILDING MATERIALS YARD FINISH: PAINT COLOR: GROUND TO UNDERSIDE OF ROOF - BUNNINGS WHITE INTERNAL FACE - FULL HEIGHT: FINISH: PAINT NOTES: BUNNINGS WHITE - REFER TO FINISHES CHART REFER TO FINISHES CHART AND ELEVATIONS FOR FURTHER DETAILS
	OUTDOOR NURSERY CONCRETE DADO WALLS MATERIAL: MIN. 150mm THICK REINFORCED VERTICAL PRECAST CONCRETE PANELS TO STRUCTURAL ENGINEER'S DESIGN FINISH: PAINT ALL FACES OF PANELS COLOR: WHITE - REFER TO FINISHES CHART
	METAL CLAD WALLS MATERIAL: 8.42mm BMT CORRUGATED PROFILE WALL CLADDING ON STEEL FRAME. REFER TO STRUCTURAL ENGINEER'S DRAWINGS FOR FRAMING DETAILS. FINISH: EXTERNAL FACE COLOR: COLOR OF CLADDING SUBJECT TO LOCATION. REFER TO ARCHITECTURAL DRAWING FOR EXTERIOR COLORING: BHP - CATHA GREEN INTERNAL FACE - OFFICES, AMENITIES, CAFE & PLAYGROUND: 1.6L LAYER OVER 1.6L PLASTERBOARD OR 1.6L PLASTERBOARD IN WET AREAS WITH TYPICAL FINISH FINISH: WHITE - REFER TO FINISHES CHART NOTES: IN ADDITION TO STANDARD CORES, USE TAMPER RESISTANT SHEETS TO 200mm A.F.F.L. AT 800mm WALL CENTRES ON EACH SIDE. IN COLOR COORDINATION TO MATCH WALL CLADDING. USE 2 DIFFERENT ALTERNATING HEAD PROFILES. AVAILABLE FROM VISIBILITY LTD. FLASHINGS, CAPSING AND TRIM GENERALLY: MATERIAL: MILD FLASHING (FED) IN 0.50mm BHP (BHP PRODUCT) FINISH: COLORBOND BHP - CATHA GREEN INSULATION AND SANDING: MATERIAL: COMPOSITE SANDING INSULATION BLANKET OR BUNNINGS WATSON'S BLANKET - THERMOPLAST 180' DECOMPOSITIVE FOAM FINISH: COLORBOND BHP - CATHA GREEN NOTES: INSTALL IN ACCORDANCE WITH MANUFACTURER'S RECOMMENDATIONS TO ACHIEVE SPECIFIED R RATINGS
	INTERNAL CONCRETE WALLS MATERIAL: MIN. 150mm THICK REINFORCED VERTICAL PRECAST CONCRETE PANELS TO UNDERSIDE OF ROOF STRUCTURE. AS PER STRUCTURAL ENGINEER'S DESIGN FINISH: PAINT ALL FACES COLOR: WHITE - REFER TO FINISHES CHART
	INSULATED PANEL WALL MATERIAL: NOM. 150mm THICK INSULATED WALL PANEL TO THE UNDERSIDE OF ROOF STRUCTURE. ALLOW FOR NON-LOAD BEARING WALL STIFFENERS FINISH: PRE-PAINTED STEEL COLOR: THREDBO WHITE
	INTERNAL STUD WALLS MATERIAL: 80x40mm TIMBER STUDS JOIST WITH 1.6L LAYER 150mm PLASTERBOARD TO ALL EXPOSED SIDES. BHP PLASTERBOARD WITH RECESSED EDGE IN WET AREAS - INCLUDING CAVE AREA FINISH: PAINT ALL FACES COLOR: REFER TO FINISHES CHART AND INTERNAL ELEVATIONS FOR RELEVANT AREAS
	STRUCTURAL WALL MATERIAL: MIN. 150mm THICK REINFORCED VERTICAL PRECAST CONCRETE PANELS - TYPICAL FINISH: PAINT ALL FACES COLOR: REFER TO FINISHES CHART AND INTERNAL ELEVATIONS FOR RELEVANT AREAS

FENCE SCHEDULE	
	PERIMETER FENCE MATERIAL: 2100mm HIGH CHAIN WIRE MESH FENCE 2100mm HIGH HEAVY DUTY 3.15mm GAUGE CHAIN WIRE MESH (50x50mm APERTURE) 3x4 ROWS OF BARBED WIRE ABOVE - DOUBLE STRANDS TWISTED TOGETHER IN DOWN PATTERN @ 200 CTS. FINISH: GALVANISED (UNPAINTED) NOTES:
	BUILDING MATERIALS AND LANDSCAPE YARD FENCE MATERIAL: 300mm HIGH WELD MESH FENCE 300mm HIGH 4.5mm GAUGE ARC WELD GRID MESH (50x50mm APERTURE) 1x4 ROWS OF BARBED WIRE ABOVE - DOUBLE STRANDS TWISTED TOGETHER IN DOWN PATTERN @ 200 CTS. FINISH: GALVANISED (UNPAINTED) NOTES: SPACING BETWEEN FENCE FRAME AND ADJACENT STRUCTURE MUST NOT EXCEED 20mm
	OUTDOOR NURSERY FENCES/POOL FENCE MATERIAL: 4050mm HIGH FENCE/POOL FENCE 3750mm HIGH HANDHELD HIGH TENSILE WELD MESH PANELS WITH 10mm x 8mm x 4mm APERTURE. MAX PANEL HEIGHT 2400mm RECTANGULAR HOLLOW SECTION FIXED UPRIGHT WITH PRECAST DADO FRAME BETWEEN 40mm x 40mm GALVANISED CONTRAST FRAME BOTTOM RAIL AND METAL CASKING READ TO TOP WITH SHEET FRAMING. PANELS TO BE OVERLAPPED ON POST AND EXCEEDS MIN. CUT BACK TO EDGE OF POST. 50mm MIN FLAT COVER/PLATE FIRED TO POST OVER JOINTS. PANELS TO BE SECURED USING GALVANISED SHEAR BOLT FASTENERS. RACKING PANELS TO SECURE JOINTS. TENSILE STRENGTH IS 4400N/mm ² . NOTES: GALVANISED (UNPAINTED) EXTEND FENCE POSTS TO 3000mm ABOVE FFL WHERE REQUIRED FOR FLOODLIGHTS. REFER TO ELECTRICAL DRAWINGS FOR REQUIRED LOCATIONS. SPACING BETWEEN FENCE FRAME AND ADJACENT STRUCTURE MUST NOT EXCEED 20mm

ELEVATION & SECTIONS FINISHES SCHEDULE	
	FINISH: PAINT COLOR: DULUX SHADE REF: 97142 - BUNNINGS RED
	FINISH: PAINT - TEXTURED COATING COLOR: DULUX SHADE REF: 97144 - BUNNINGS STUCCO
	FINISH: PAINT - TEXTURED COATING COLOR: DULUX SHADE REF: 97160 - BUNNINGS BUILDING GREEN
	FINISH: PAINT - TEXTURED COATING COLOR: DULUX SHADE REF: 97146 - BUNNINGS BUILDING WHITE
	FINISH: GALVANISED COLOR: NATURAL
	FINISH: COLORBOND COLOR: BHP - CATHA GREEN
	FINISH: COLORBOND COLOR: THREDBO WHITE

PRELIMINARY


<table><tr><td>22.03.18</td><td>G</td><td>REVISED ISSUED FOR S96; BULK TRADE WALL TYPES REVISED, PRECAST FEATURE ADDED TO NURSERY AND BULKY FACADE, CARPARKING NUMBERS AND FLOOR AREAS UPDATED</td><td>JB/TV</td></tr><tr><td>21.02.18</td><td>F</td><td>REVISED ISSUED FOR S96; BULK TRADE, BAGGED GOODS & REAR WALL HEIGHTS UPDATED</td><td>JB</td></tr><tr><td>19.02.18</td><td>E</td><td>REVISED ISSUED FOR S96; GOODS INWARDS FENCE & GATE ADDED, ARMO BARRIER AISLE CLEARANCE UPDATED</td><td>JB</td></tr><tr><td>18.02.18</td><td>D</td><td>REVISED ISSUED FOR S96; BULK TRADE & BULKY ROOF REVISED, ARMO BARRIER UPDATED</td><td>JB</td></tr><tr><td>15.02.18</td><td>C</td><td>REVISED ISSUED FOR S96; BULK TRADE CANOPY REVISED, REVISED TO BUNNINGS RACK PLAN RPS, OF A INCLUDING REVISED ACCESS TO TRADE OFFICE, TRADE AMENITIES ADDED, SLIDING GATE ADDED FROM GOODS INWARDS TO BULK TRADE</td><td>JB</td></tr><tr><td>25.01.18</td><td>B</td><td>ISSUED FOR S96</td><td>JB</td></tr><tr><td>11.01.18</td><td>A</td><td>PRELIMINARY ISSUE</td><td>JB</td></tr><tr><td>DATE</td><td>REV</td><td>AMENDMENT</td><td>BY</td></tr></table>				22.03.18	G	REVISED ISSUED FOR S96; BULK TRADE WALL TYPES REVISED, PRECAST FEATURE ADDED TO NURSERY AND BULKY FACADE, CARPARKING NUMBERS AND FLOOR AREAS UPDATED	JB/TV	21.02.18	F	REVISED ISSUED FOR S96; BULK TRADE, BAGGED GOODS & REAR WALL HEIGHTS UPDATED	JB	19.02.18	E	REVISED ISSUED FOR S96; GOODS INWARDS FENCE & GATE ADDED, ARMO BARRIER AISLE CLEARANCE UPDATED	JB	18.02.18	D	REVISED ISSUED FOR S96; BULK TRADE & BULKY ROOF REVISED, ARMO BARRIER UPDATED	JB	15.02.18	C	REVISED ISSUED FOR S96; BULK TRADE CANOPY REVISED, REVISED TO BUNNINGS RACK PLAN RPS, OF A INCLUDING REVISED ACCESS TO TRADE OFFICE, TRADE AMENITIES ADDED, SLIDING GATE ADDED FROM GOODS INWARDS TO BULK TRADE	JB	25.01.18	B	ISSUED FOR S96	JB	11.01.18	A	PRELIMINARY ISSUE	JB	DATE	REV	AMENDMENT	BY	<p>CONTRACTOR TO CHECK ALL DIMENSIONS ON SITE BEFORE COMMENCING ANY WORK OR PREPARING ANY SHOP DRAWINGS</p> <p></p> <p>©</p> <p>UNLESS OTHERWISE AGREED THIS DRAWING AND THE INTELLECTUAL PROPERTY CONTAINED HERE ON REMAINS THE PROPERTY OF</p>		<p>ARCHITECT:</p> <p>Michael Carr Architect, Pty. Ltd</p> <p>ADDRESS 171-2</p> <p>88 Tope Street, South Melbourne 3205 Ph 03 9446 5433 Fax 03 9586 4004 Email admin@mcararchitect.com.au</p>	<table><tr><td colspan="2">ARCHITECTURAL</td><td colspan="2">PROJECT No:</td></tr><tr><td colspan="2">SCALE:</td><td colspan="2">As indicated @ A0</td></tr><tr><td colspan="2">DATE:</td><td colspan="2">07.12.17</td></tr><tr><td colspan="2">FILE:</td><td colspan="2">17018</td></tr><tr><td colspan="2">DESIGNED:</td><td colspan="2">VERIFICATION: THIS DRAWING HAS BEEN REVIEWED & VERIFIED BY:</td></tr><tr><td colspan="2">DRAWN:</td><td colspan="2">DRAWING No:</td></tr><tr><td colspan="2">CHECKED:</td><td colspan="2">AA5-01</td></tr><tr><td colspan="2">MC</td><td colspan="2"></td></tr></table>		ARCHITECTURAL		PROJECT No:		SCALE:		As indicated @ A0		DATE:		07.12.17		FILE:		17018		DESIGNED:		VERIFICATION: THIS DRAWING HAS BEEN REVIEWED & VERIFIED BY:		DRAWN:		DRAWING No:		CHECKED:		AA5-01		MC				<table><tr><td colspan="2">PROJECT:</td><td colspan="2">DRAWING TITLE:</td></tr><tr><td colspan="2">BUNNINGS WAREHOUSE</td><td colspan="2">SECTIONS</td></tr><tr><td colspan="2">OXLEY HIGHWAY</td><td colspan="2"></td></tr><tr><td colspan="2">PORT MACQUARIE, NSW 2444</td><td colspan="2"></td></tr></table>	PROJECT:		DRAWING TITLE:		BUNNINGS WAREHOUSE		SECTIONS		OXLEY HIGHWAY				PORT MACQUARIE, NSW 2444				<table><tr><td>REVISION:</td><td>G</td></tr></table>	REVISION:	G
22.03.18	G	REVISED ISSUED FOR S96; BULK TRADE WALL TYPES REVISED, PRECAST FEATURE ADDED TO NURSERY AND BULKY FACADE, CARPARKING NUMBERS AND FLOOR AREAS UPDATED	JB/TV																																																																																									
21.02.18	F	REVISED ISSUED FOR S96; BULK TRADE, BAGGED GOODS & REAR WALL HEIGHTS UPDATED	JB																																																																																									
19.02.18	E	REVISED ISSUED FOR S96; GOODS INWARDS FENCE & GATE ADDED, ARMO BARRIER AISLE CLEARANCE UPDATED	JB																																																																																									
18.02.18	D	REVISED ISSUED FOR S96; BULK TRADE & BULKY ROOF REVISED, ARMO BARRIER UPDATED	JB																																																																																									
15.02.18	C	REVISED ISSUED FOR S96; BULK TRADE CANOPY REVISED, REVISED TO BUNNINGS RACK PLAN RPS, OF A INCLUDING REVISED ACCESS TO TRADE OFFICE, TRADE AMENITIES ADDED, SLIDING GATE ADDED FROM GOODS INWARDS TO BULK TRADE	JB																																																																																									
25.01.18	B	ISSUED FOR S96	JB																																																																																									
11.01.18	A	PRELIMINARY ISSUE	JB																																																																																									
DATE	REV	AMENDMENT	BY																																																																																									
ARCHITECTURAL		PROJECT No:																																																																																										
SCALE:		As indicated @ A0																																																																																										
DATE:		07.12.17																																																																																										
FILE:		17018																																																																																										
DESIGNED:		VERIFICATION: THIS DRAWING HAS BEEN REVIEWED & VERIFIED BY:																																																																																										
DRAWN:		DRAWING No:																																																																																										
CHECKED:		AA5-01																																																																																										
MC																																																																																												
PROJECT:		DRAWING TITLE:																																																																																										
BUNNINGS WAREHOUSE		SECTIONS																																																																																										
OXLEY HIGHWAY																																																																																												
PORT MACQUARIE, NSW 2444																																																																																												
REVISION:	G																																																																																											



PHOTO LOCATION PLAN
1:1500@A0



PHOTO LOCATION 4



PHOTO LOCATION 1



PHOTO LOCATION 2



PHOTO LOCATION 3

DATE	REV	AMENDMENT	BY
22.03.18	F	REVISED ISSUED FOR S96; BULK TRADE WALL TYPES REVISED; PRECAST FEATURE ADDED TO NURSERY AND BULKY FACADE; CARPARKING NUMBERS AND FLOOR AREAS UPDATED	JB/TV
21.02.18	E	REVISED ISSUED FOR S96; BULK TRADE; BAGGED GOODS & REAR WALL HEIGHTS UPDATED	JB
19.02.18	D	REVISED ISSUED FOR S96; GOODS INWARDS FENCE & GATE ADDED; ARMCO BARRIER AISLE CLEARANCE UPDATED	JB
18.02.18	C	REVISED ISSUED FOR S96; BULK TRADE & BULKY ROOF REVISED; ARMCO BARRIER UPDATED	JB
15.02.18	B	REVISED ISSUED FOR S96; BULK TRADE CANOPY REVISED; REVISED TO BUNNINGS TRACK PLAN RPO 01 A INCLUDING; REVISED ACCESS TO TRADE OFFICE; TRADE AMENITIES ADDED; SLIDING GATE ADDED FROM GOODS INWARDS TO BULK TRADE	JB
25.01.18	A	ISSUED FOR S96	JB

CONTRACTOR TO CHECK ALL DIMENSIONS ON SITE BEFORE COMMENCING ANY WORK OR PREPARING ANY SHOP DRAWINGS

©

UNLESS OTHERWISE AGREED THIS DRAWING AND THE INTELLECTUAL PROPERTY CONTAINED HERE ON REMAINS THE PROPERTY OF



ARCHITECT:

Michael Carr Architect Pty. Ltd.

88 Tope Street, South Melbourne 3205
Ph 03 9646 5635 Fax 03 9686 4084
Email admin@mcararchitect.com.au

ARCHITECTURAL

PROJECT: **BUNNINGS WAREHOUSE
OXLEY HIGHWAY
PORT MACQUARIE, NSW 2444**

DRAWING TITLE: **EXISTING PERSPECTIVES**

SCALE: 1:1500@A0	PROJECT No: 17018	
DATE: 07.12.17	VERIFICATION: THIS DRAWING HAS BEEN REVIEWED & VERIFIED BY:	
FILE:	DESIGNED: -	
DRAWN: CY	DRAWING No: AA6-01	
CHECKED: MC	REVISION: F	



PHOTO LOCATION 1



PHOTO LOCATION 3



PHOTO LOCATION 2



PHOTO LOCATION 4

DATE	REV	AMENDMENT	BY
22.03.18	F	REVISED ISSUED FOR S96; BULK TRADE WALL TYPES REVISED; PRECAST FEATURE ADDED TO NURSERY AND BULKY FACADE; CARPARKING NUMBERS AND FLOOR AREA UPDATED	JB/TV
21.02.18	E	REVISED ISSUED FOR S96; BULK TRADE; BAGGED GOODS & REAR WALL HEIGHTS UPDATED	JB
19.02.18	D	REVISED ISSUED FOR S96; BULK TRADE; BAGGED GOODS & REAR WALL HEIGHTS UPDATED	JB
18.02.18	C	REVISED ISSUED FOR S96; BULK TRADE & BULKY ROOF REVISED; ARMCO BARRIER UPDATED	JB
15.02.18	B	REVISED ISSUED FOR S96; BULK TRADE CANOPY REVISED; REVISED TO BUNNINGS TRACK PLAN RPO 01 A INCLUDING; REVISED ACCESS TO TRADE OFFICE; TRADE AMENITIES ADDED; SLIDING GATE ADDED FROM GOODS INWARDS TO BULK TRADE	JB
25.01.18	A	ISSUED FOR S96	JB

CONTRACTOR TO CHECK ALL DIMENSIONS ON SITE BEFORE COMMENCING ANY WORK OR PREPARING ANY SHOP DRAWINGS

©

UNLESS OTHERWISE AGREED THIS DRAWING AND THE INTELLECTUAL PROPERTY CONTAINED HERE ON REMAINS THE PROPERTY OF



ARCHITECT:

Michael Carr Architect Pty Ltd

88 Tope Street, South Melbourne 3205
Ph 03 9646 5035 Fax 03 9688 4284
Email admin@mcararchitect.com.au

ARCHITECTURAL	
PROJECT:	DRAWING TITLE:
BUNNINGS WAREHOUSE OXLEY HIGHWAY PORT MACQUARIE, NSW 2444	PROPOSED PERSPECTIVES

SCALE:	@ A0	PROJECT No:	17018
DATE:	07.12.17	FILE:	VERIFICATION: THIS DRAWING HAS BEEN REVIEWED & VERIFIED BY:
DESIGNED:		DRAWN:	CY
CHECKED:	MC	DRAWING No:	AA6-02
		REVISION:	F